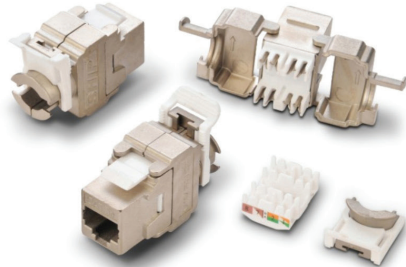


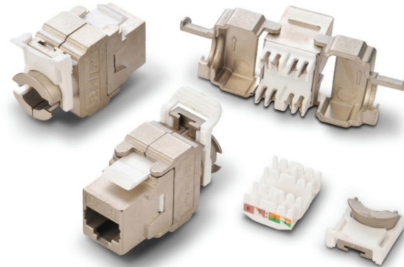
RJ 45 SHIELDED KEYSTONE JACKS

CAT5e Keystone jack shielded. (Tool Less)



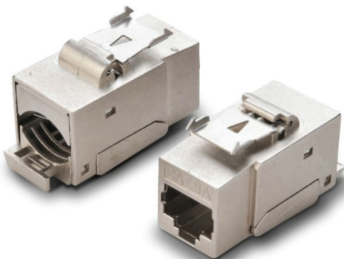
- Meet ISO/IEC 11801, TIA/EIA568C
- Fit for wires AWG22-26
- Plug insertion life 750 cycles Min
- Dielectric strength: When applied AC 750V or DC 1000V 1 minute between adjacent terminal NO change
- Material: Using PC/ABS for cover, PC for module, phosphor bronze for IDC wire post.

CAT6 Keystone jack shielded. (Tool Less)



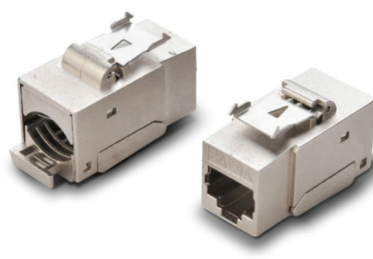
- Meet ISO/IEC 11801, TIA/EIA568C.
- Fit for wires AWG22-26.
- Plug insertion life 750 cycles Min.
- Dielectric strength: When applied AC 750V or DC 1000V 1 minute between adjacent terminal NO change.
- Material: Using PC/ABS for cover, PC for module, phosphor bronze for IDC wire post.

CAT6 Keystone jack shielded.



- Meet ISO/IEC 11801, TIA/EIA568C.
- Fit for wires AWG22-26.
- Plug insertion life 750 cycles Min.
- Dielectric strength: When applied AC 750V or DC 1000V 1 minute between adjacent terminal NO change.
- Material: Using PC/ABS for cover, PC for module, phosphor bronze for IDC wire post.

CAT6A Keystone jack shielded.



- Meet ISO/IEC 11801, TIA/EIA568C.
- Fit for wires AWG22-26.
- Plug insertion life 750 cycles Min.
- Dielectric strength: When applied AC 750V or DC 1000V 1 minute between adjacent terminal NO change.
- Material: Using PC/ABS for cover, PC for module, phosphor bronze for IDC wire post.

Part No.	Item Description
M5ES090	CAT 5e KEYSTONE JACK SHIELDED RJ45 90 DEGREE
M5ES180	CAT 5e KEYSTONE JACK SHIELDED RJ45 180 DEGREE
M06S090	CAT 6 KEYSTONE JACK SHIELDED RJ45 90 DEGREE
M06S180	CAT 6 KEYSTONE JACK SHIELDED RJ45 180 DEGREE
M6AS090	CAT 6A KEYSTONE JACK SHIELDED RJ45 90 DEGREE
M6AS180	CAT 6A KEYSTONE JACK SHIELDED RJ45 180 DEGREE